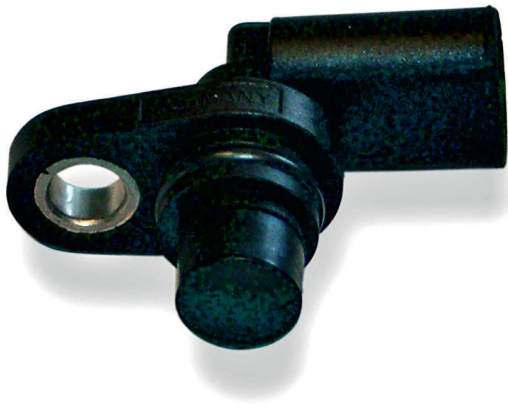


# Hall-Effect Speed Sensor HA-P2

www.bosch-motorsport.com



**BOSCH**  
Invented for life



- ▶ Camshaft/crankshaft/wheel speed
- ▶ 15 mm depth
- ▶ Very small housing
- ▶ Very light weight
- ▶ Active low

This sensor is designed for incremental measurement of rotational speed (e.g. camshaft, crankshaft or wheelspeed).

Due to the rotation of a ferromagnetic target wheel in front of the HA-P2, the magnetic field is modulated at the place of the Hall probe. A Hall-effect sensor element with integrated signal conditioning circuit detects this change and generates a digital output signal. The main feature and benefit of this sensor is the combination of a high quality production part, robust design, very small housing and low weight.

## Application

### Application

Application	Speed
Max. frequency	≤ 10 kHz
Target wheel air gap	0.5 to 2.5 mm
Temperature range	-40 to 160°C
Output circuit	Open collector for 1 kOhm
Output type	Active low
External magnetic fields	< 0.1 mT
Max. vibration	400 m/s <sup>2</sup> at 10 Hz to 2 kHz

## Technical Specifications

### Mechanical Data

Weight w/o wire	12 g
Bore diameter	15 mm
Installation depth L2	15 mm
Mounting	With screw 1 x M6
Tightening torque	8 Nm

### Electrical Data

Power supply U <sub>S</sub>	4.75 to 18 V
Current I <sub>S</sub>	10 mA

### Characteristic

Accuracy repeatability of the falling edge of tooth	
up to 1.5 mm	< 4 % (≤ 10 kHz)
up to 2.5 mm	< 8 % (≤ 10 kHz)
Signal output	0.4 V to < U <sub>S</sub>

### Connectors and Wires

Connector	Hirschmann 872-658-501 Cod.A
Mating connector	F 02U B00 520-01
Pin 1	U <sub>s</sub>
Pin 2	Sig
Pin 3	Gnd

### Environment

Target wheel diameter D	162.34 mm
Thickness t	12.5 mm
Width of teeth b1	3.8 mm
Width of gap b2	4.7 mm
Width of sync. gap b3	20.79 mm
Depth of teeth h1	3.4 mm
Number of teeth	60-2

### Installation Notes

#### Application Notes

The HA-P2 can be connected directly to most control units and data logging systems.

Please avoid abrupt temperature changes.

For mounting please use only the integrated plug.

If a wheel with different dimensions is used (see Environment), the technical function has to be tested individually.

Please ensure that the environmental conditions do not exceed the sensor specifications.

Please find further application hints in the offer drawing at our homepage.

#### Safety Note

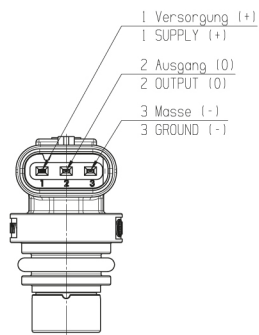
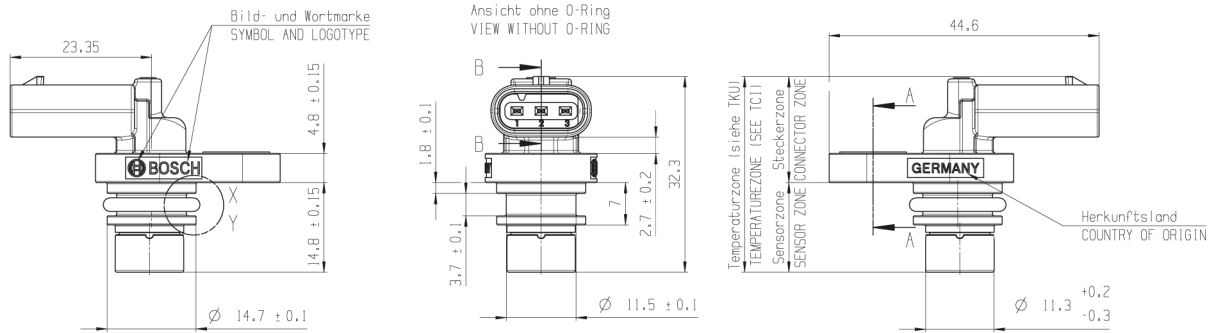
The sensor is not intended to be used for safety related applications without appropriate measures for signal validation in the application system.

### Ordering Information

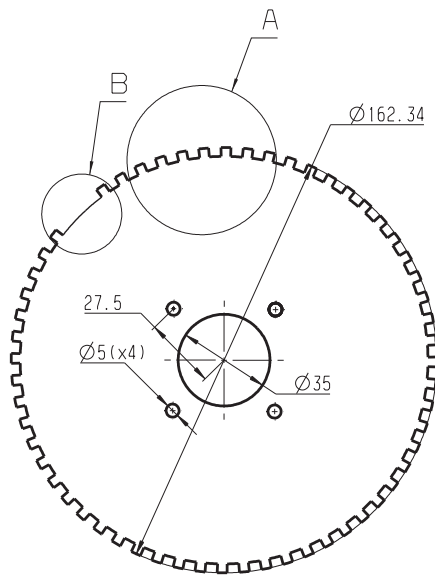
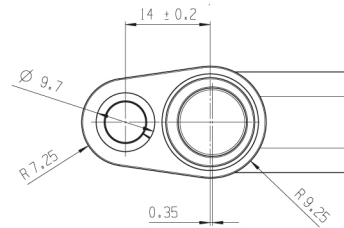
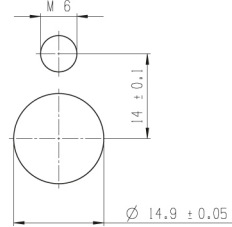
#### Hall-Effect Speed Sensor HA-P2

Order number **0 232 103 111**

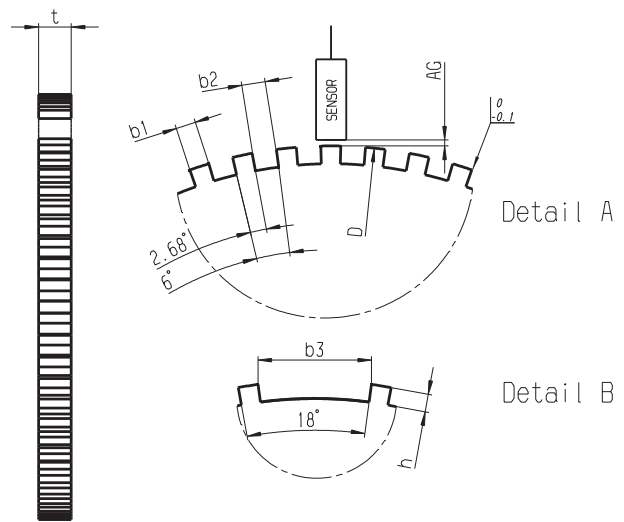
Dimensions



GLOBAL MOUNTING REQUIREMENT



60-2 Teeth



Left view

**Represented by:**

**Europe:**  
Bosch Engineering GmbH  
Motorsport  
Robert-Bosch-Allee 1  
74232 Abstatt  
Germany  
Tel.: +49 7062 911 9101  
Fax: +49 7062 911 79104  
motorsport@bosch.com  
www.bosch-motorsport.de

**North America:**  
Bosch Engineering North America  
Motorsport  
38000 Hills Tech Drive  
Farmington Hills, MI 48331-3417  
United States of America  
Tel.: +1 248 876 2977  
Fax: +1 248 876 7373  
motorsport@bosch.com  
www.bosch-motorsport.com

**Latin America:**  
Robert Bosch Ltda  
Motorsport  
Av Juscelino Kubitscheck de  
Oliveira 11800  
Zip code 81460-900  
Curitiba - Parana  
Brasilia  
Tel.: +55 41 3341 2057  
Fax: +55 41 3341 2779

**Asia-Pacific:**  
Bosch Engineering Japan K.K.  
Motorsport  
18F Queen's Tower C, 2-3-5 Minato Mirai  
Nishi-ku, Yokohama-shi  
Kanagawa 220-6218  
Japan  
Tel.: +81 45 650 5610  
Fax: +81 45 650 5611  
www.bosch-motorsport.jp

**Australia, New Zealand and South Africa:**  
Robert Bosch Pty. Ltd  
Motorsport  
1555 Centre Road  
Clayton, Victoria, 3168  
Australia  
Tel.: +61 (3) 9541 3901  
motor.sport@au.bosch.com