

# Fuel Pressure Regulator Mini 2

www.bosch-motorsport.com



- ▶ 5 to 10 bar
- ▶ All versions Methanol compatible
- ▶ 30 to 400 l/h reflow
- ▶ Adjusted at 105 l/h
- ▶ Aluminum housing

Fuel pressure regulators are used to maintain constant fuel pressure at the injection valves.

We offer this regulator for gasoline as well as for methanol applications.

The main benefit of this regulator includes a higher pressure range and a higher return flow rate in comparison to the production type regulators.

## Application

Pressure range	See ordering information
Reflow quantity	30 to 400 l/h
Fuel compatibility	Gasoline, E85, M100
Operating temperature	-40 to 120°C
Storage temperature	-40 to 100°C
Max. vibration	<600 m/s <sup>2</sup> at 5 to 250 Hz

## Technical Specifications

### Variations

Please see Ordering Information

## Mechanical Data

Diameter	38.1+0.1-0.2 mm
Weight	Ca. 61 g
Mounting	Fastening with a clip

## Connectors and Wires

Connector supply	Diam. 25 mm, O-ring 25x2.5
Connector reflow	Diam. 9.1 mm, O-ring 5x2.5

## Installation Notes

Never run the regulator without the integrated filter.

Please oil O-rings lightly with clean and silicone free engine oil before you install the regulator.

Please make a leak test after you have installed the regulator.

When the pressure regulator is removed and will be reused, the O-rings must be tested for fractures.

Operation of the pressure regulator with a medium other than gasoline is not allowed.

Using the FPR Adaptor F 02U V00 735-02 you can rebuild the regulator an inline type.

This pressure regulator is not designed for in-tank mounting.

### Ordering Information

**Fuel Pressure Regulator Mini 2**

Pressure Range 5.0 bar

Order number **F 02U V02 166-01**

**Fuel Pressure Regulator Mini 2**

Pressure Range 5.5 bar

Order number **F 02U V02 167-01**

**Fuel Pressure Regulator Mini 2**

Pressure Range 6.0 bar

Order number **F 02U V02 168-01**

**Fuel Pressure Regulator Mini 2**

Pressure Range 6.5 bar

Order number **F 02U V02 169-01**

**Fuel Pressure Regulator Mini 2**

Pressure Range 7.0 bar

Order number **F 02U V02 170-01**

**Fuel Pressure Regulator Mini 2**

Pressure Range 8.0 bar

Order number **F 02U V02 171-01**

**Fuel Pressure Regulator Mini 2**

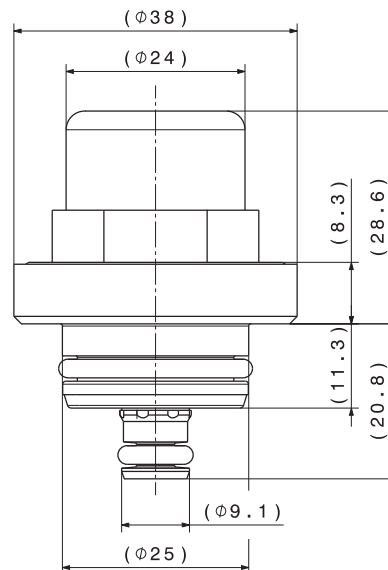
Pressure Range 10.0 bar

Order number **F 02U V02 172-01**

**FPR Adaptor**

Order number **F 02U V00 735-02**

### Dimensions



Complete dimensions on offer drawing at [www.bosch-motorsport.com](http://www.bosch-motorsport.com)

**Represented by:**

**Europe:**

Bosch Engineering GmbH  
Motorsport  
Robert-Bosch-Allee 1  
74232 Abstatt  
Germany  
Tel.: +49 7062 911 9101  
Fax: +49 7062 911 79104  
motorsport@bosch.com  
www.bosch-motorsport.de

**North America:**

Bosch Engineering North America  
Motorsport  
38000 Hills Tech Drive  
Farmington Hills, MI 48331-3417  
United States of America  
Tel.: +1 248 876 2977  
Fax: +1 248 876 7373  
motorsport@bosch.com  
www.bosch-motorsport.com

**Latin America:**

Robert Bosch Ltda  
Motorsport  
Av Juscelino Kubitscheck de  
Oliveira 11800  
Zip code 81460-900  
Curitiba - Parana  
Brasilia  
Tel.: +55 41 3341 2057  
Fax: +55 41 3341 2779

**Asia-Pacific:**

Bosch Engineering Japan K.K.  
Motorsport  
18F Queen's Tower C, 2-3-5 Minato Mirai  
Nishi-ku, Yokohama-shi  
Kanagawa 220-6218  
Japan  
Tel.: +81 45 650 5610  
Fax: +81 45 650 5611  
www.bosch-motorsport.jp

**Australia, New Zealand and South Africa:**

Robert Bosch Pty. Ltd  
Motorsport  
1555 Centre Road  
Clayton, Victoria, 3168  
Australia  
Tel.: +61 (3) 9541 3901  
motor.sport@au.bosch.com