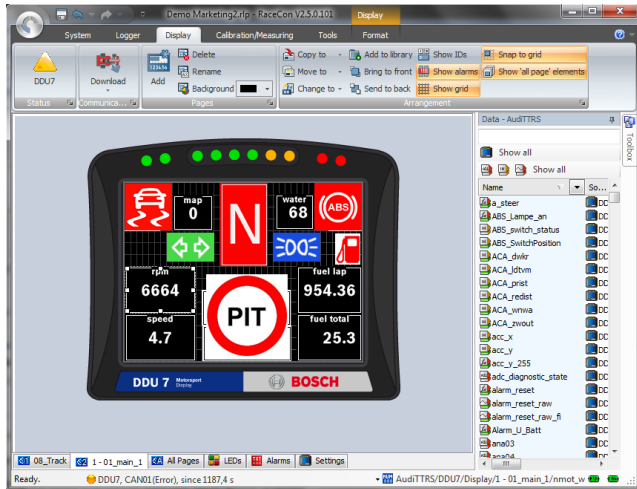


RaceCon

www.bosch-motorsport.com



► An all integrated software tool for configuration and calibration

RaceCon is an all integrated software tool for configuration and calibration of Bosch Motorsport hardware products, such as ECUs, displays, loggers. The communication is based on Bosch Motorsport MSA-Box interface.

Functions

- Calibration of ECU maps and curves
- ECU data file up- and download
- Parameter file up- and download
- Diagnostic functionality for Bosch Motorsport ECUs
- Data file / Work base management
- Integrated flash functionality
- Integrated Bosch sensor database
- Configuration of Bosch Motorsport displays
- Configuration of Bosch Motorsport data loggers
- Configuration of Bosch Motorsport DLS system
- Configuration of Bosch Motorsport CAN modules
- Communication via K-Line/CAN/Ethernet (KWP/CCP/XCP)

CAN communication log functionality (Baud rate changeable)

Quick data access over Race Mode

Intuitive design, easy to use

Technical Specifications

Environment

- PC
- IBM PC Pentium/AMD Athlon compatible, min. 1.6 GHz
- Min. 2 GB RAM
- Min. 1 GB free hard disc space
- VGA/WGA monitor (min. 1,024 x 768)
- Windows XP 32 Bit, Vista 32/64 Bit, Windows 7 32/64 Bit

Optional Accessories

- MSA-Box II
- F 02U V00 327-02

Ordering Information

RaceCon

Order number **Free download at our homepage**