

Pressure Sensor Air PSB-4

www.bosch-motorsport.com



- ▶ Absolute air pressure measurement
- ▶ Measurement range 0.5 to 4.0 bar
- ▶ Analog output
- ▶ Very short response time

This sensor is designed to measure absolute air pressure, especially the air box and boost pressure of gasoline or Diesel engines over a wide range.

An integrated circuit combines a piezo-resistive sensor element, electronics for signal-amplification and temperature-compensation. The output of the sensor is an analog, ratio metric signal.

The main feature and benefit of this sensor is the combination of the high quality of the production part and an individual calibration. Each sensor is delivered with a calibration sheet to enable very small measurement tolerances. Furthermore the sensor has a very short response time.

Application

Application	0.5 to 4 bar (a)
Pressure reference type	absolute
Max. pressure	6 bar
Operating temp. range	-40 to 130°C
Media temp. range	-40 to 130°C
Storage temp. range	-40 to 130°C
Max. vibration	20 m/s ² at 10 to 1,000 Hz

Technical Specifications

Mechanical Data

Mounting	M6
Fitting	12.05 mm
Weight w/o wire	20 g
Sealing	O-ring 7.59 x 2.62 mm

Electrical Data

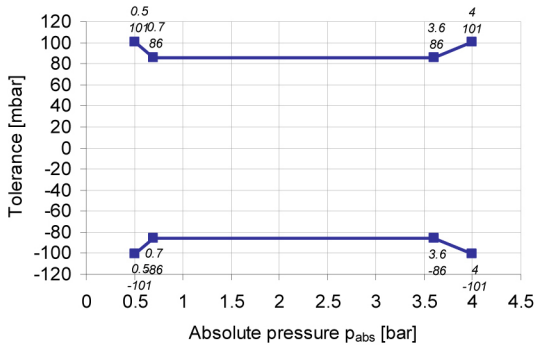
Power supply U_s	4.5 to 5.5 V
Max power supply U_s max.	16 V
Full scale output U_A at 5 V	0.3 to 4.8 V
Current I_s	9 mA

Characteristic

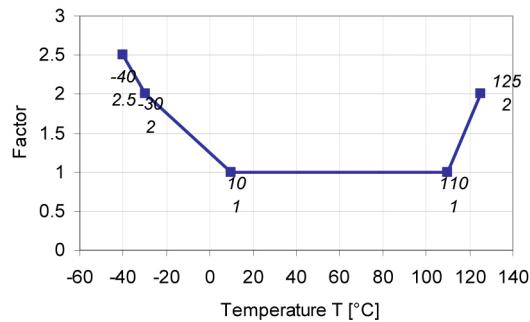
Response time T10/90	0.2 ms
Compensated range	0 to 80°C
Tolerance (FS) at $U_s = 5$ V	± 0.056 bar
Tolerance (FS)	± 1.4 %

Sensitivity	1,143 mV/bar (an individual calibration sheet will be delivered)
Offset	-71 mV (an individual calibration sheet will be delivered)

Tolerance



Expansion of Tolerance



Connectors and Wires

Connector	ASL 6-06-05PC-HE
Mating connector	F 02U 000 228-01
ASL 0-06-05SC-HE	
Pin 1	U _s
Pin 2	Gnd
Pin 3	Sig
Pin 4	-
Pin 5	-
Various motorsport and automotive connectors are available on request.	
Sleeve	DR-25
Wire size	AWG 24
Wire length L	15 to 100 cm
Please specify the required wire length with your order.	

Installation Notes

The PSB-4 is designed for engines using ROZ95, ROZ98, M15, E22 and Diesel.

The sensor can be connected directly to most control units.

Use engine oil (5W40) as O-Ring grease (no silicone based grease).

Avoid miss-pinning (max. 5 minutes at I = 0.3 A).

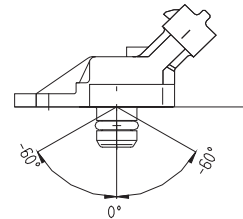
Please note that the 6mm tube connector has no function.

To optimize the accuracy of this sensor, an individual calibration sheet is delivered with each sensor.

Please find further application hints in the offer drawing. www.bosch-motorsport.com

Free download of the sensor configuration file (*.sdf) for the Bosch Data Logging System www.bosch-motorsport.com

To avoid damage caused by condensate the maximum mounting position from vertical is +60°.



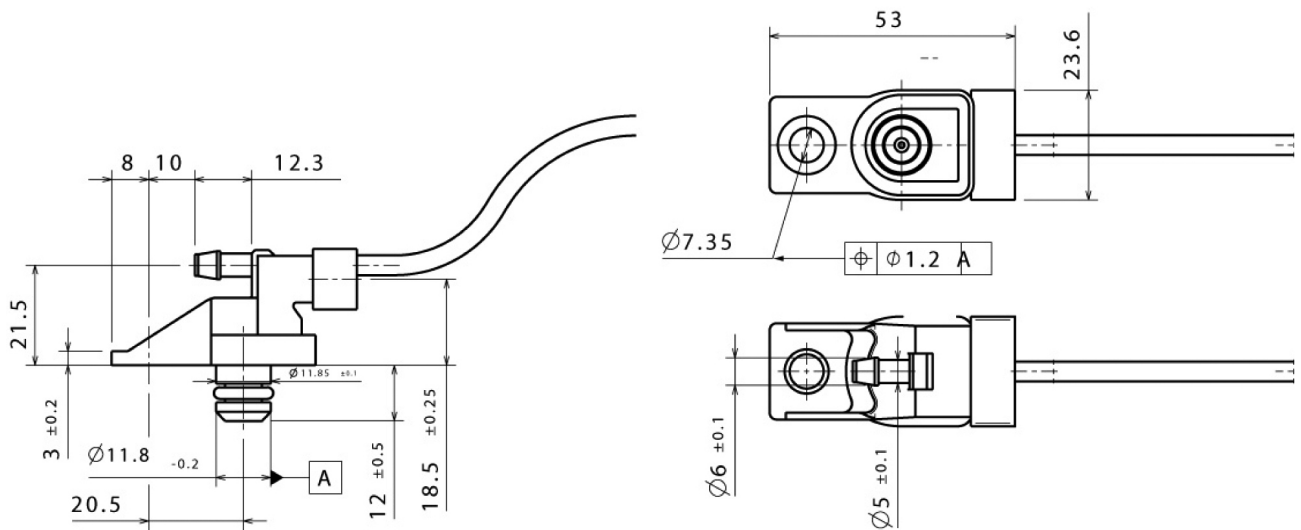
Safety Note

The sensor is not intended to be used for safety related applications without appropriate measures for signal validation in the application system.

Ordering Information

Pressure Sensor Air PSB-4
Order number **B 261 209 348-01**

Dimensions



Represented by:

Europe:
 Bosch Engineering GmbH
 Motorsport
 Robert-Bosch-Allee 1
 74232 Abstatt
 Germany
 Tel.: +49 7062 911 9101
 Fax: +49 7062 911 79104
 motorsport@bosch.com
 www.bosch-motorsport.de

North America:
 Bosch Engineering North America
 Motorsport
 38000 Hills Tech Drive
 Farmington Hills, MI 48331-3417
 United States of America
 Tel.: +1 248 876 2977
 Fax: +1 248 876 7373
 motorsport@bosch.com
 www.bosch-motorsport.com

Latin America:
 Robert Bosch Ltda
 Motorsport
 Av Juscelino Kubitscheck de
 Oliveira 11800
 Zip code 81460-900
 Curitiba - Parana
 Brasilia
 Tel.: +55 41 3341 2057
 Fax: +55 41 3341 2779

Asia-Pacific:
 Bosch Engineering Japan K.K.
 Motorsport
 18F Queen's Tower C, 2-3-5 Minato Mirai
 Nishi-ku, Yokohama-shi
 Kanagawa 220-6218
 Japan
 Tel.: +81 45 650 5610
 Fax: +81 45 650 5611
 www.bosch-motorsport.jp

Australia, New Zealand and South Africa:
 Robert Bosch Pty. Ltd
 Motorsport
 1555 Centre Road
 Clayton, Victoria, 3168
 Australia
 Tel.: +61 (3) 9541 3901
 motor.sport@au.bosch.com